

Name;

Assessment quiz

Diagram 1 below shows the lungs and the trachea, the airway leading to the lungs. One of the lungs is drawn in section.

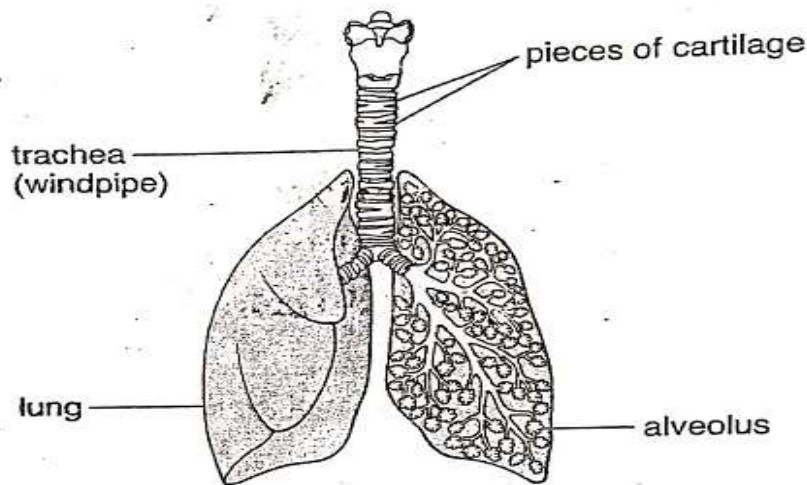


diagram 1

- (a) In the wall of the trachea, there are pieces of a stiff material called cartilage.

Why is this stiff material necessary in the wall of the trachea?

1 mark

- (b) Diagram 2 below shows one alveolus and its blood supply.

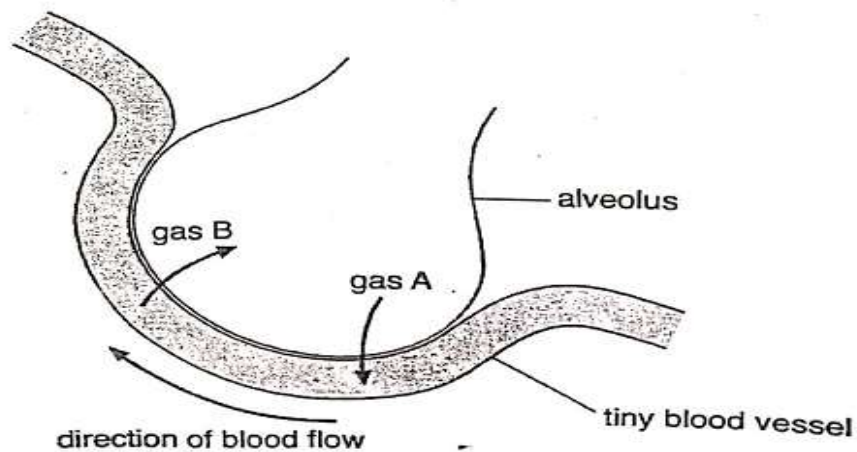
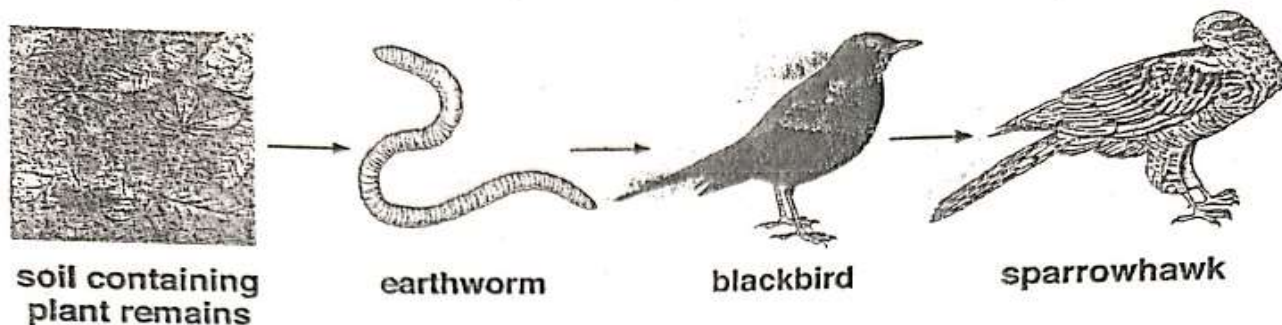


diagram 2

Copper and arsenic are present in the soil near copper mines.
When earthworms eat this soil they change from brown to bright yellow.
The copper and arsenic are **not** poisonous to earthworms.

(a) Earthworms are part of the food chain shown below.



- (i) Use the food chain to suggest how copper and arsenic get into the body of a sparrowhawk.

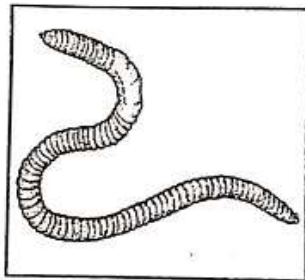
- (ii) Mary suggested that blackbirds are more likely to catch bright yellow earthworms than brown earthworms.

Give **one** reason why this might be true.

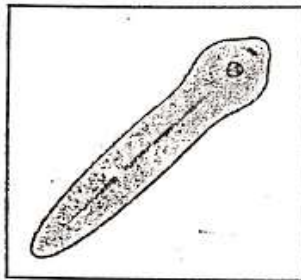
- (b) Mary wanted to count the bright yellow earthworms and the brown earthworms in the soil at different distances from the mines.

What important information about the soil could she get from her results?

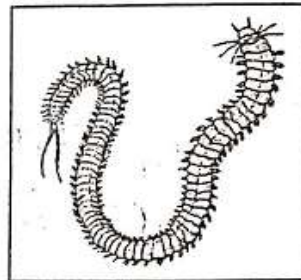
(c) The drawings below show an earthworm and three other worms.



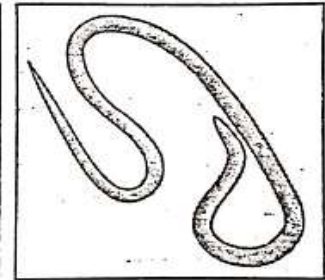
earthworm



flatworm



ragworm



roundworm

not to scale

The ragworm belongs to the same group as the earthworm.

How can you tell this from the drawings?

(d) The roundworm and some flatworms are parasites.

What does this mean?

Tick the correct box.

They feed only on insects.

☐

They live in a burrow.

☐

They feed on other living things and harm them.

☐

They live in the sea.

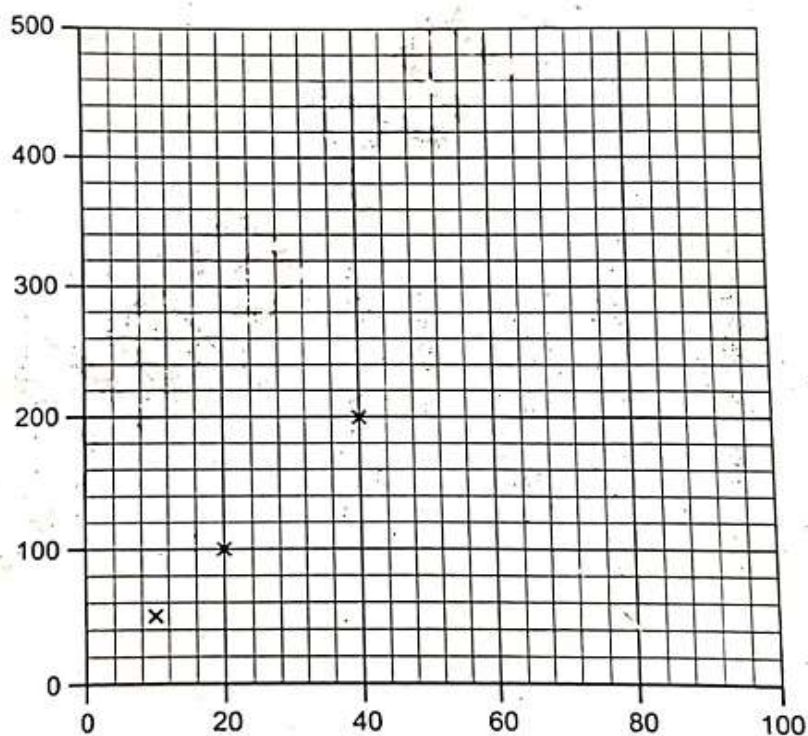
☐

Youssef has some information about the distance a cyclist can travel in a given time.

time in seconds	distance in metres
10	50
20	100
40	200
60	300
100	500

(a) Complete the graph using the information in the table by

- labelling the axes including units
- plotting the last two points
- drawing a line of best fit.



[3]

(b) Calculate the speed of the cyclist.

.....
.....

speed m/s [2]